

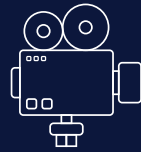


YOUR SPACE  
TO CREATE  
**EXTRAORDINARY**

---

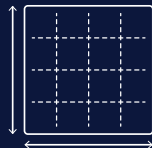
[www.farnboroughinternationalstudios.com](http://www.farnboroughinternationalstudios.com)

# THE SETTING FOR WORLD-CLASS PRODUCTIONS



## **4 STAGES**

including two purpose-built,  
22,000 sq ft sound stages



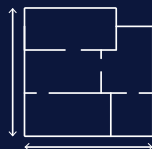
## **210,000 sq ft +**

total stage space



## **1,000,000 sq ft +**

external space for unit, crowd & crew



## **20,000 sq ft**

workshop space



## **3,500**

free onsite parking spaces

### Plus:

- Modern production offices and ancillary spaces to suit every production size
- Standing set, driving shoots and onsite location opportunities across site
- Accessible location, 37 miles from central London and 24 miles from London Heathrow Airport
- Adjacent to onsite Farnborough Airport with runway views
- Private and secure site with private roads, dedicated Wi-Fi, water and catering services
- Dedicated Destination Zero sustainability charter and commitment to Albert and Green Production initiatives
- Numerous nearby shooting locations, accommodation and local amenities
- Experienced team and personable, boutique service

**FARNBOROUGH**  
INTERNATIONAL  
**STUDIOS**



**IF**

Farnborough International Studios is a leading film location within the South-East of England, offering state-of-the-art filming facilities for the creative industries.

Our two 22,000sqft sound stages have been designed to meet the needs and provide better creative spaces for production companies and content makers. The studios sit within a world-class events space that offers extensive exhibition space and locations that can augment your shoot.

Our studios have been created by industry professionals who understand the demands of film and high-end TV production, providing professional facilities and solutions for filming and productions worldwide.

We operate an intimate studio structure and focus on providing an exclusive, personable experience. We understand the demands of a production, and our expert team are equipped to respond quickly to provide the operational and service support you need.

# STATE-OF-THE-ART STUDIO FACILITIES

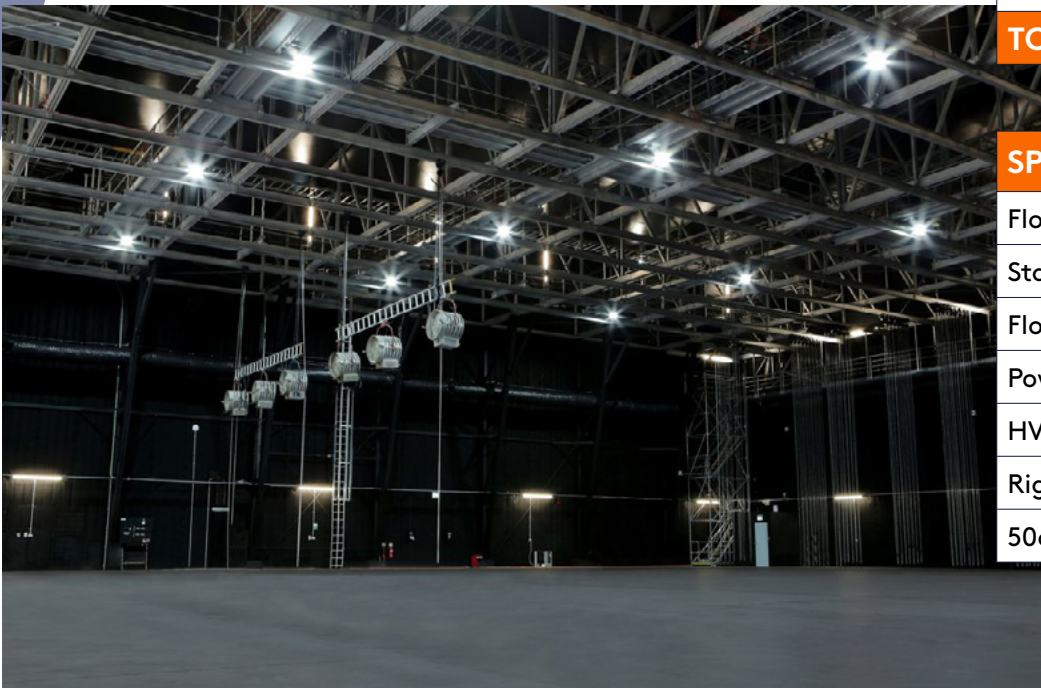




# STUDIO FACILITIES

## SOUND STAGES

STAGES		
FACILITY	SQ M	SQ FT
Stage 1	2,000	21,527
Stage 2	2,000	21,527
<b>TOTAL</b>	<b>4,000</b>	<b>43,054</b>



SPECIFICATION
Floor to beam working height 11.5m/37.7ft
Stage door 4.8m x 6.5m/15.7ft x 21.3ft
Floor loading built to withstand multiple plant activities
Power capacity 20,000 sq ft = 1600 KVA
HVAC powerful ventilation and AC industrial grade ATMOS system
Rigging weight 500kg per 5m x 2.5m/16.4ft x 8.2ft grid
50dB sound reduction as standard

# 16 ADDITIONAL SUPPORTING ON-SITE LOCATIONS



**HALL 1**  
132,740 SQ FT  
PILLARLESS SPACE

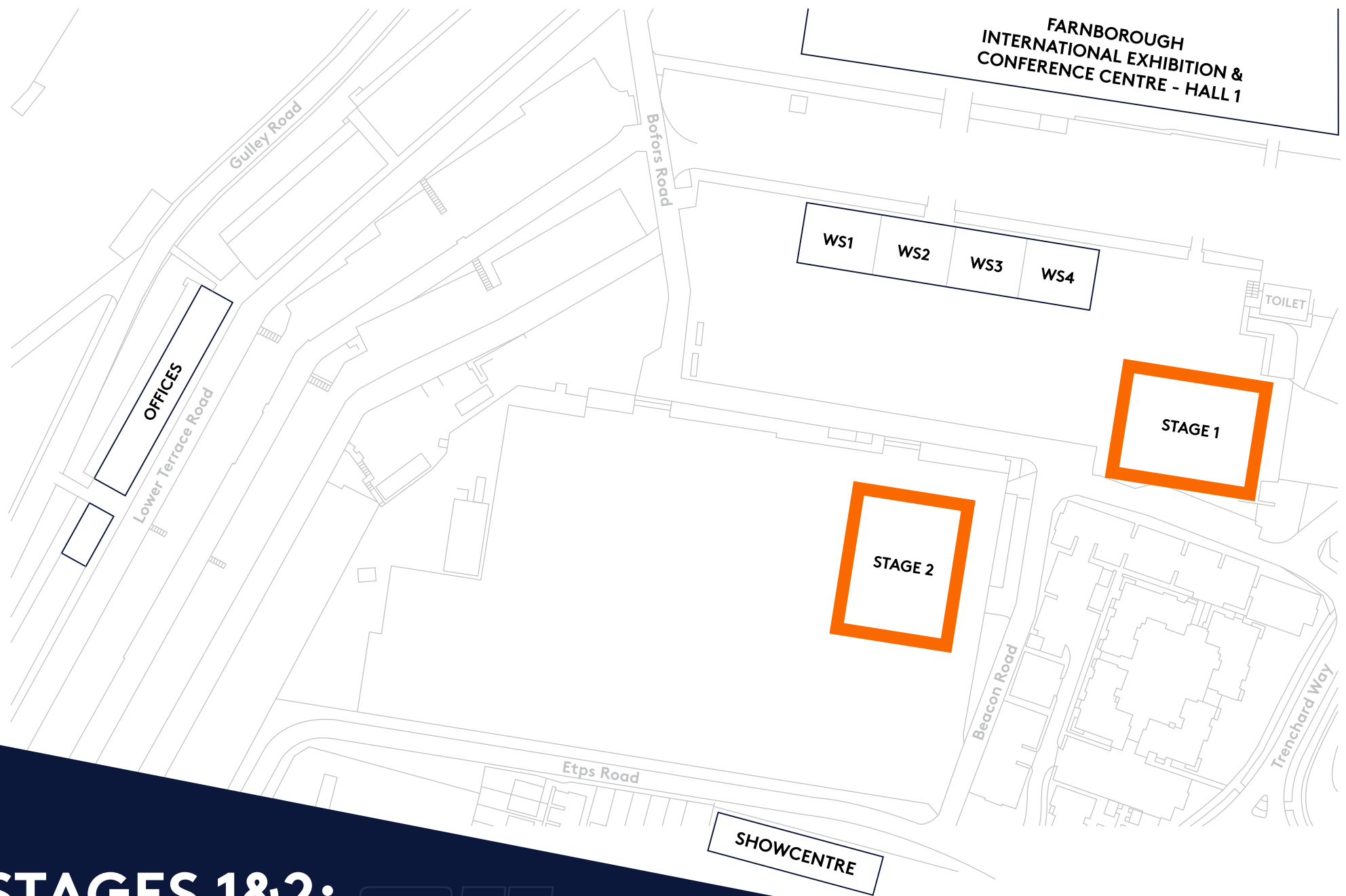


**UNIT BASE**  
1,076,391 SQ FT  
EXTERNAL SPACE

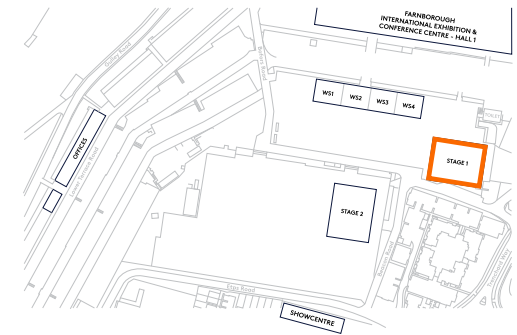
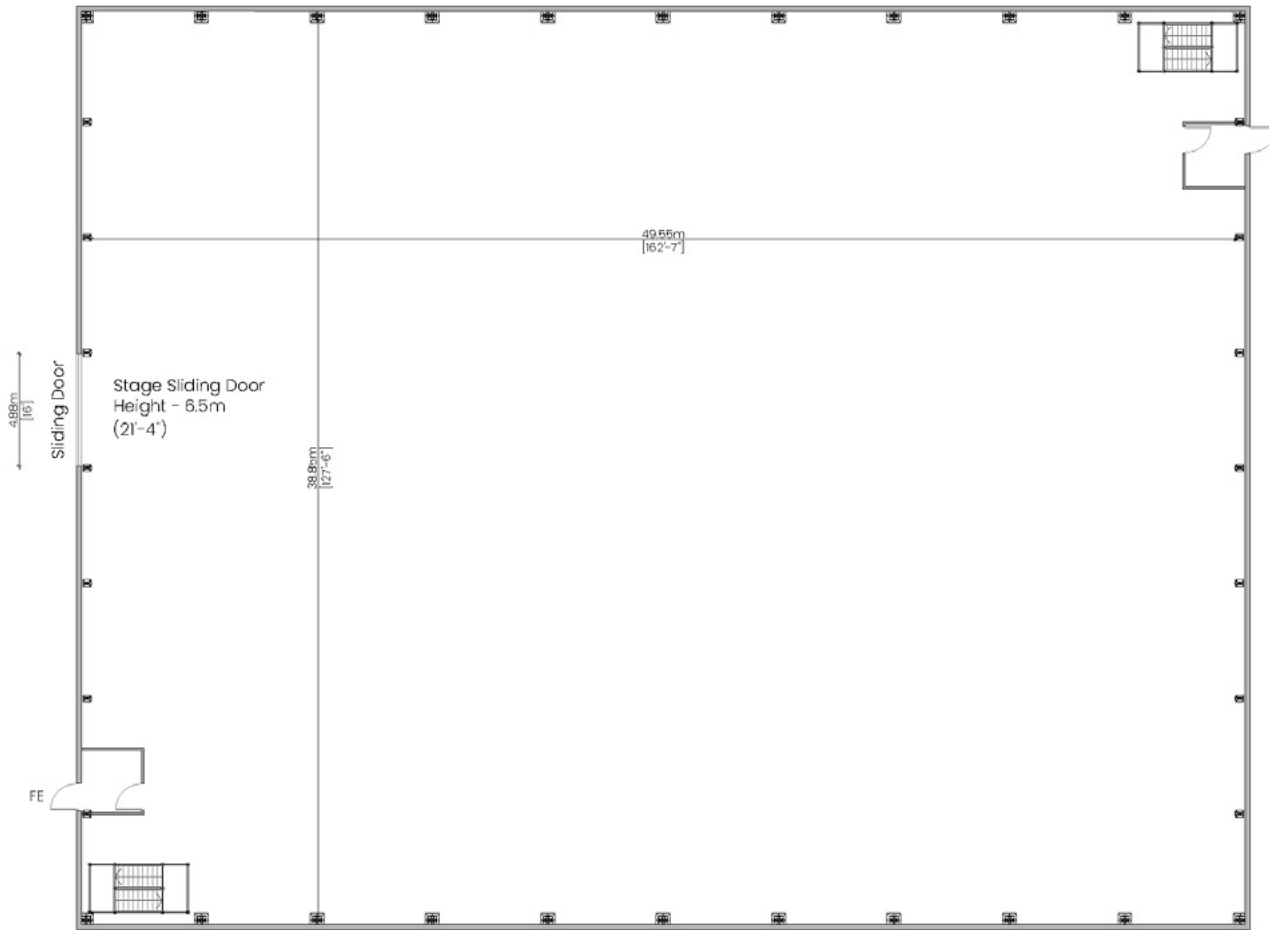


**HALL 5**  
33,906 SQ FT  
PILLARLESS SPACE

Farnborough International Studios is located within a world-class events space and can support your production with additional larger spaces and car parks for unit bases with access to power and water supply.

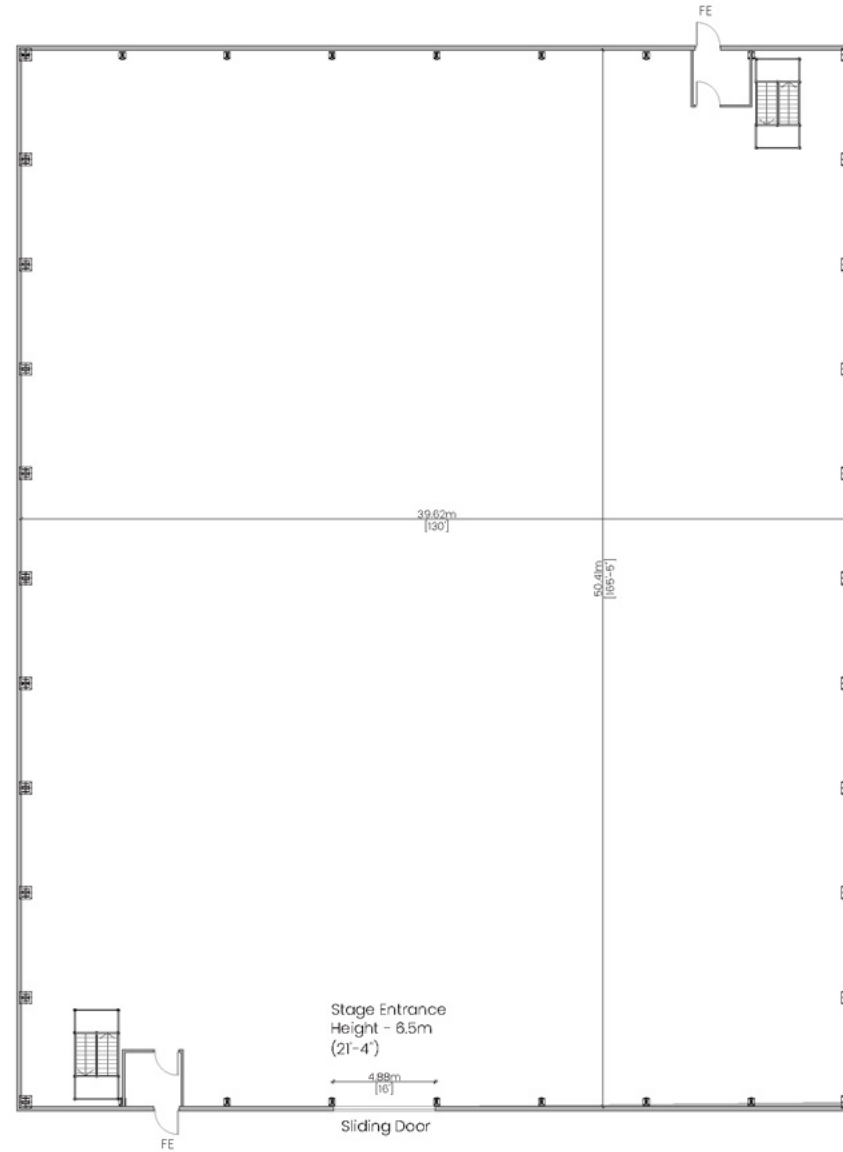
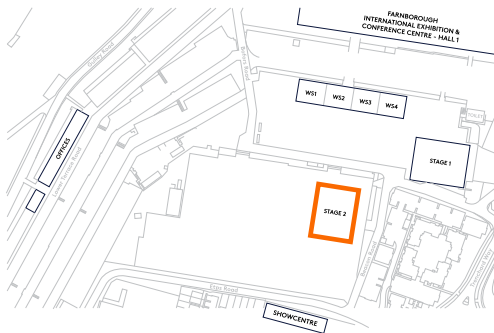


# STAGES 1&2: STUDIO MAP



# STAGE 1 PLAN

GROSS INTERNAL AREA: 2000 SQM / 21527 SQ FT



# STAGE 2 PLAN

GROSS INTERNAL AREA: 2000 SQM / 21527 SQ FT



# PRODUCTION OFFICE SHOWCENTRE



## SPECIFICATION

Net2 access control security

Fast internet capabilities

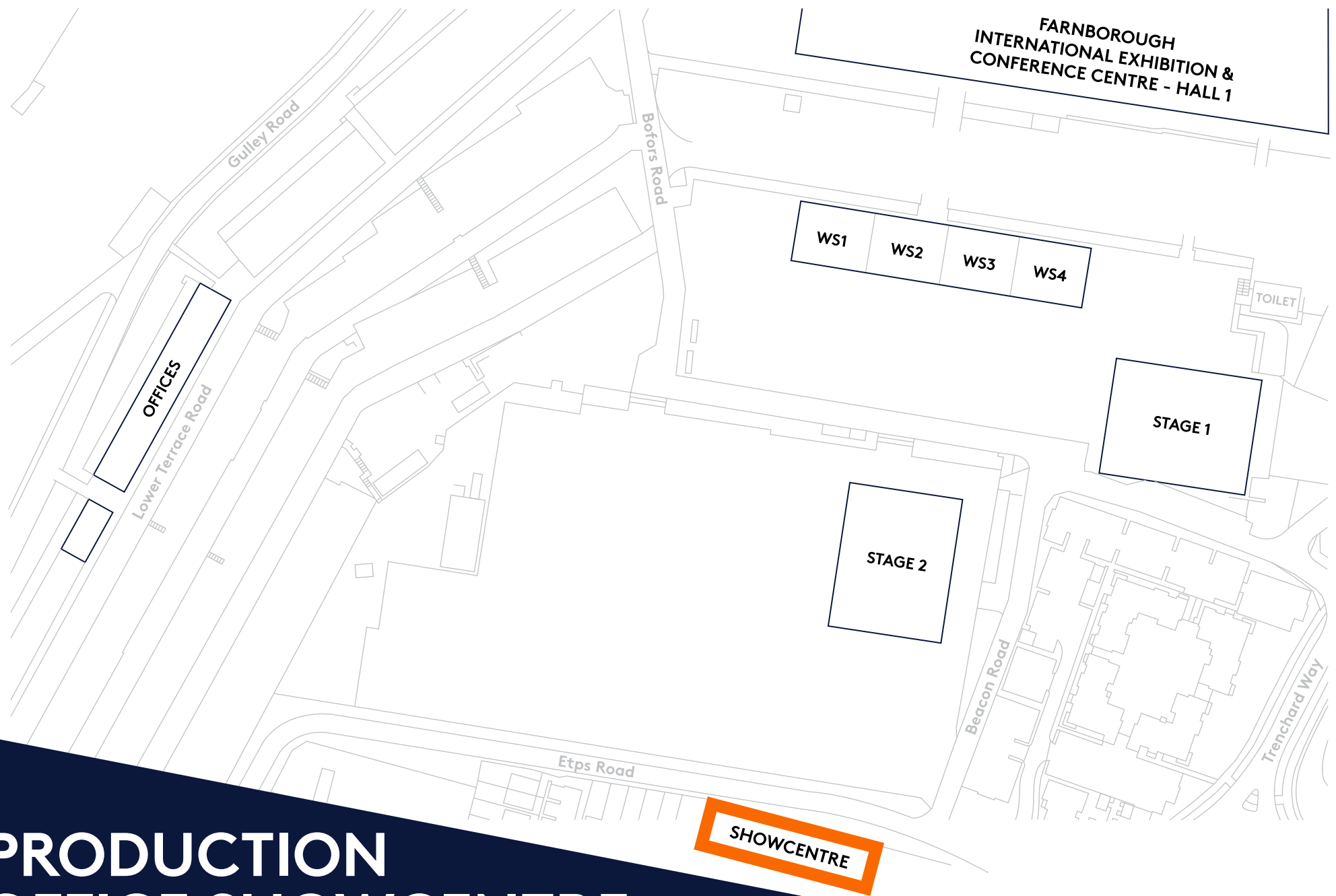
Air-conditioned

Furnished

Open plan offices

Kitchen

Toilets



# PRODUCTION OFFICE SHOWCENTRE: **STUDIO MAP**

# PRODUCTION OFFICE CHALETs



## CHALET OFFICES

FACILITY	SQ M	SQ FT
Chalet Office 1	188	2,023
Chalet Office 2	189	2,024
Chalet Office 3	189	2,024
Chalet Office 4	188	2,023
Chalet Office 5	188	2,023
<b>TOTAL</b>	<b>942</b>	<b>10,117</b>

## SPECIFICATION

Net2 access control security

Fast internet capabilities

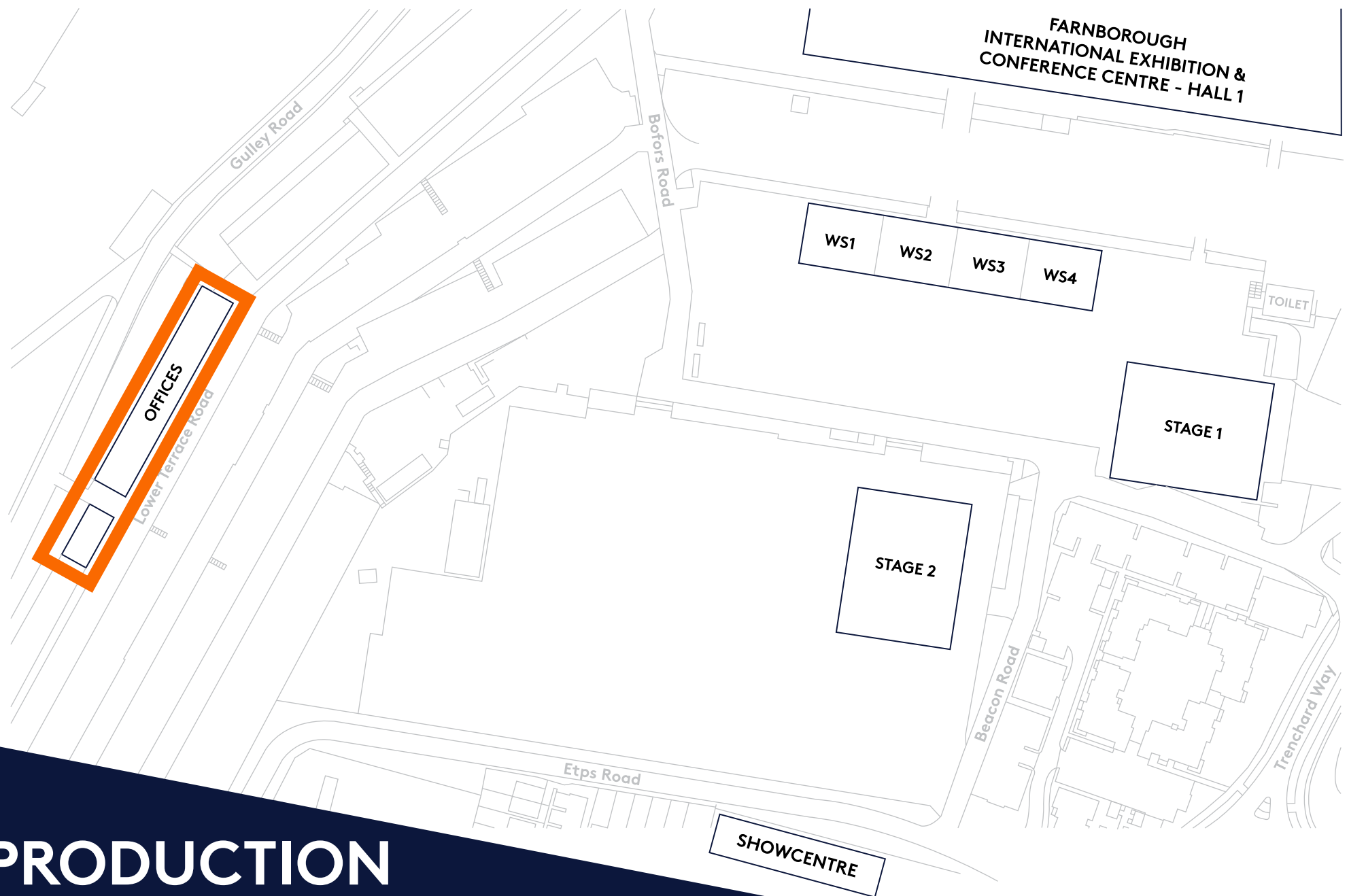
Air-conditioned

Furnished

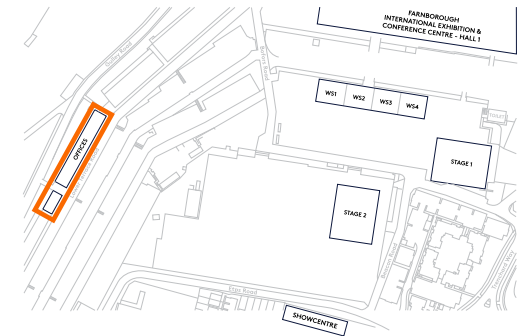
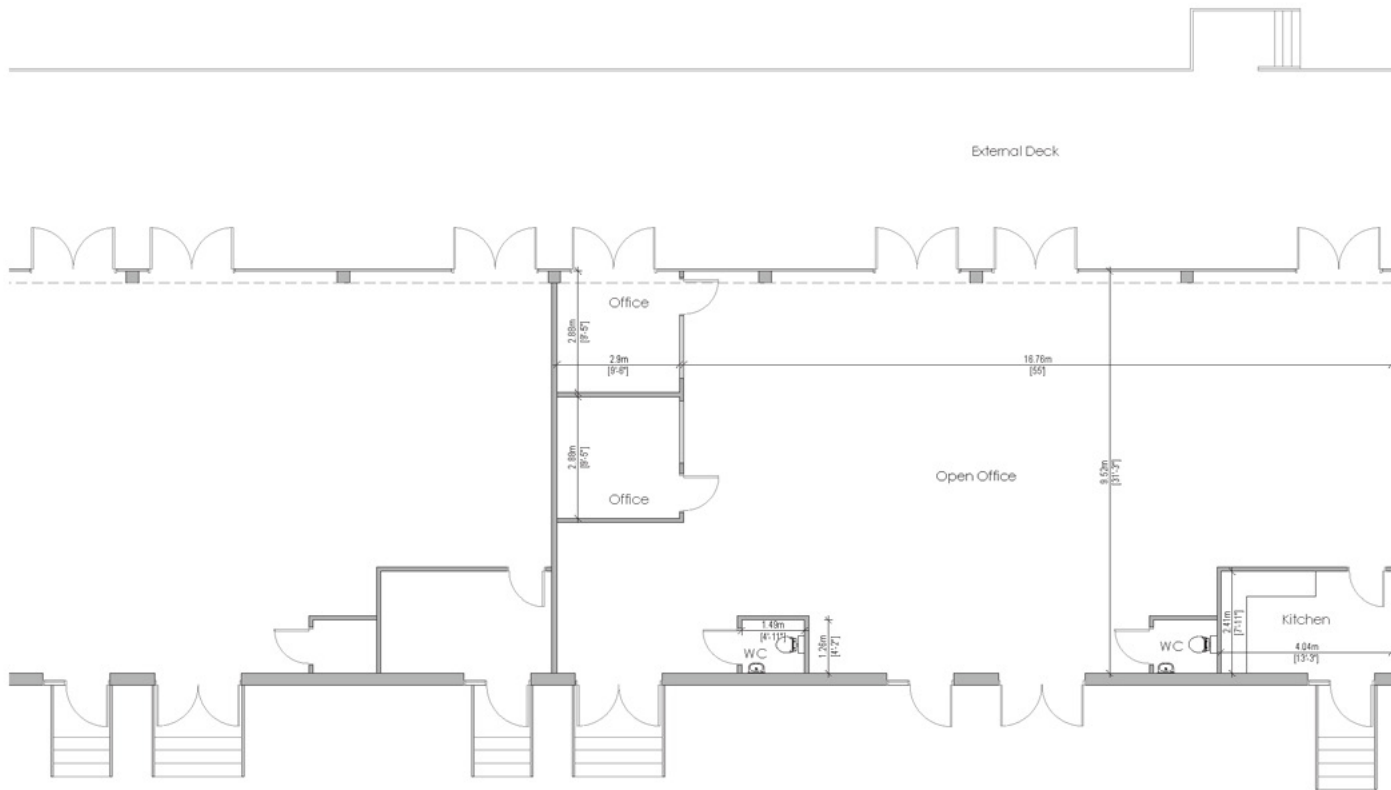
Open plan offices

Kitchen

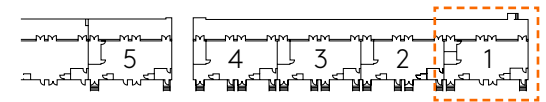
Toilets



# PRODUCTION OFFICE CHALET: **STUDIO MAP**



Key



# OFFICE CHALET 1

# PLAN

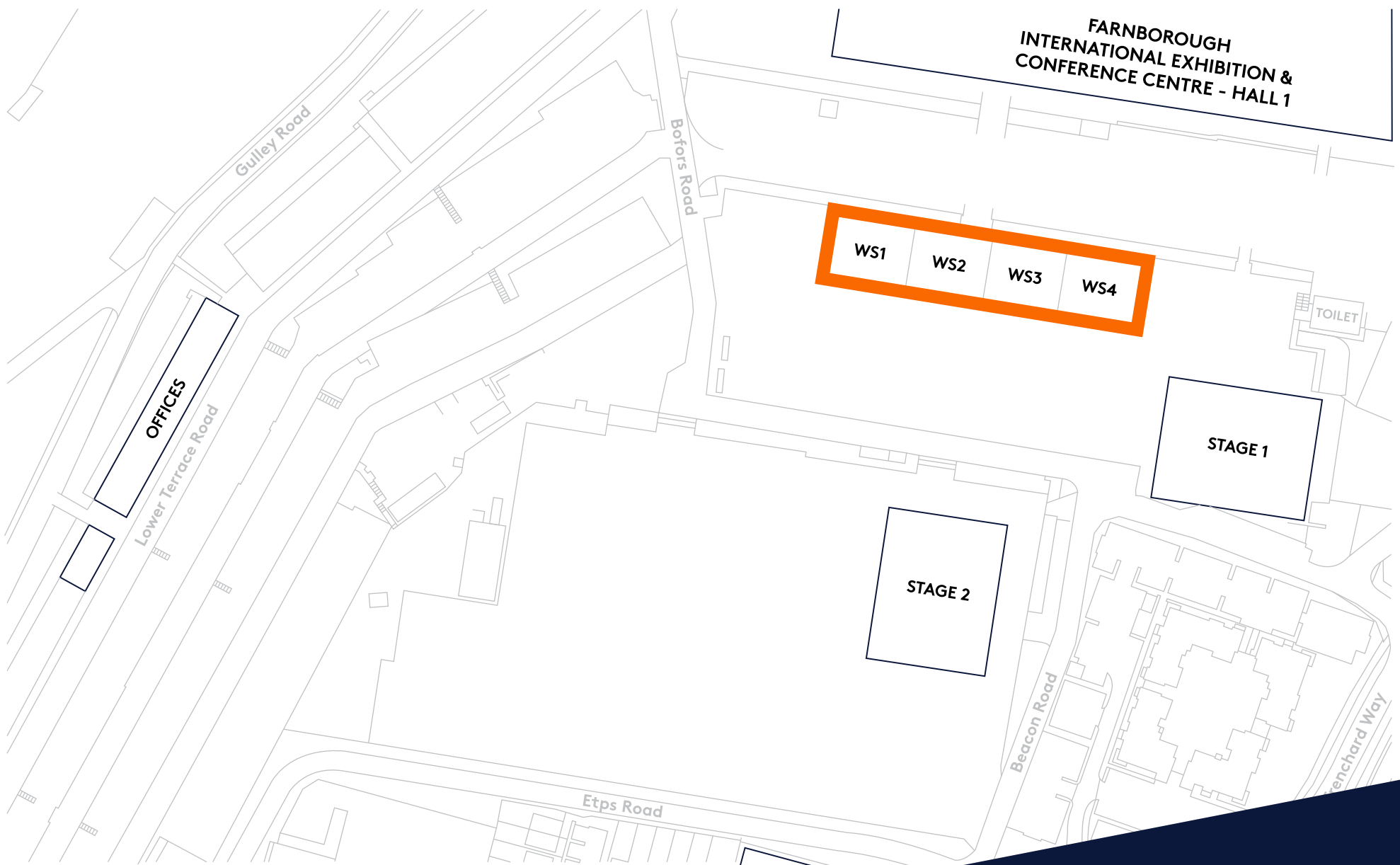
GROSS INTERNAL AREA: 188 SQM / 2023 SQ FT

WORKSHOPS		
FACILITY	SQ M	SQ FT
Workshop 1	2,000	21,527
Workshop 2	2,000	21,527
Workshop 3		
Workshop 4		
<b>TOTAL</b>	<b>4,000</b>	<b>43,054</b>

SPECIFICATION
Floor to eaves working height 7.07m/23.20ft
Roller door 5m/16.5ft wide 3m/9.10ft high
Power Capacity 3 phase power
Heating



**WORKSHOPS**



FARNBOROUGH  
INTERNATIONAL EXHIBITION &  
CONFERENCE CENTRE - HALL 1

WS1 WS2 WS3 WS4

TOILET

STAGE 1

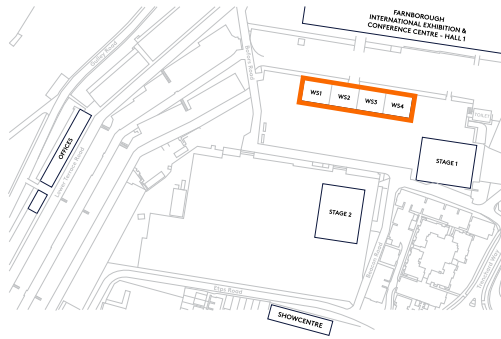
STAGE 2

OFFICES

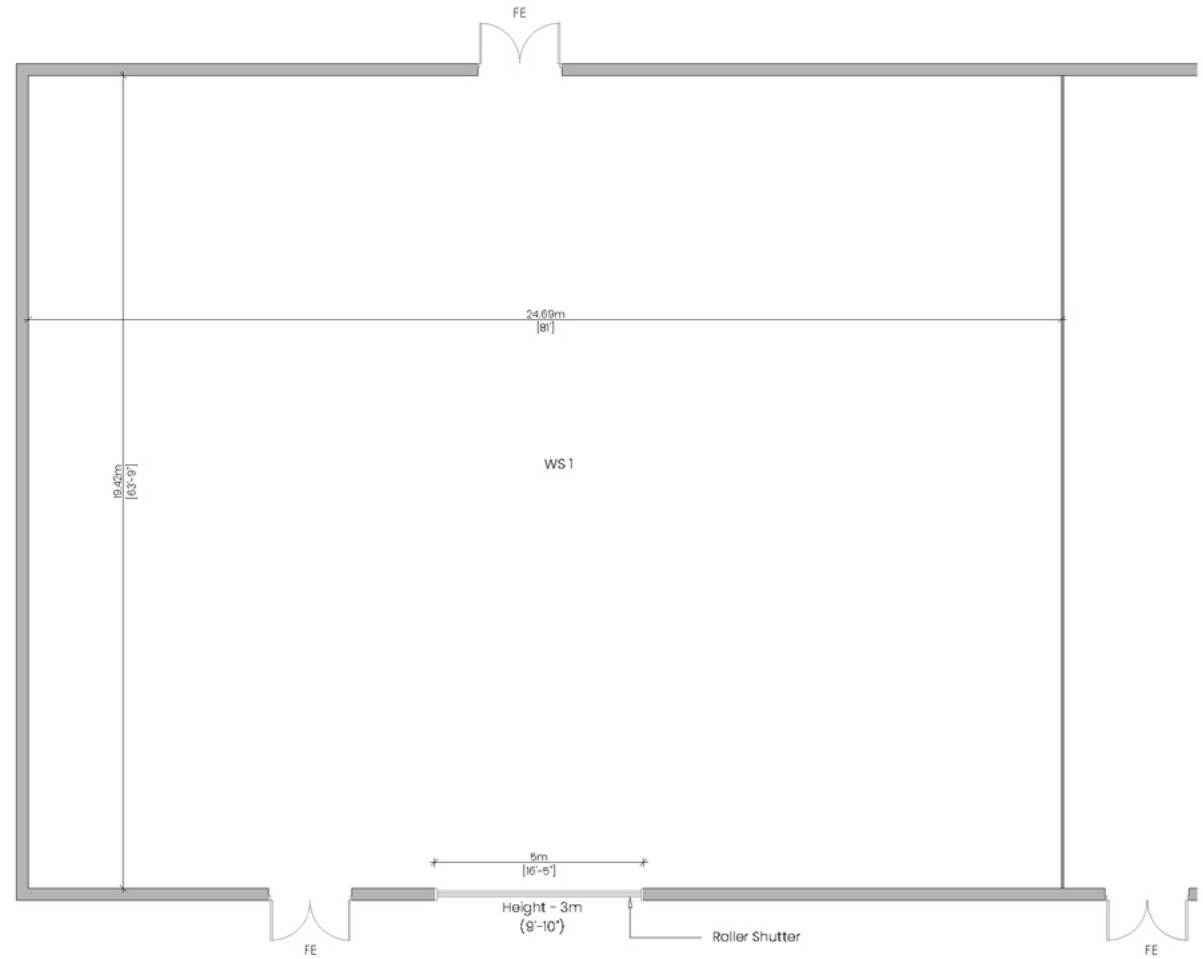
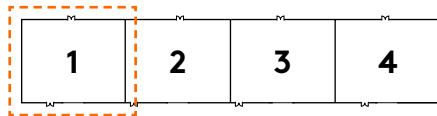
SHOWC

# WORKSHOPS 1-4

# STUDIO MAP



Key



# WORKSHOP 1

## PLAN

GROSS INTERNAL AREA: 480 SQM / 5167 SQ FT





# STUDIOS LOCATION & NEARBY LOCATIONS

Farnborough International Studios is well positioned for some of the most popular shooting locations near London.

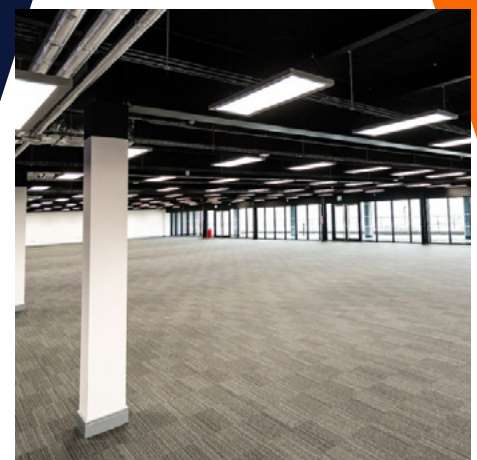
The studios site is located southwest of London just off the M3, 35 minutes from central London by train, and 30 minutes from Heathrow Airport.

Numerous additional filming locations are within a 15-mile radius of the studios and present diverse and adaptable options for period and contemporary properties, as well as build spaces and doubles for overseas locations.

The locations listed have been used in features such as Marvel's Avengers, The Gladiator, World War Z, Black Widow, The Kingsman and many more.

# LOCATION FILMING ACROSS WIDER SITE

Farnborough International's locations have been used in many film and television programs and we are open to supporting various location shoots. From car chases to airport lobbies, Farnborough International Studios will work with you to create the shoot you want.





**ADDITIONAL  
NEARBY LOCATIONS**

# NEAR THE LOT

Farnborough International Studios offers fantastic nearby amenities, from high-end to more budget friendly options. Many amenities also have crew discounts- just ask the team!

## HOTELS

- The Aviator (5 \*)
- The Village
- Holiday Inn

## CAFÉ'S

- Elevenses
- The Teashop Around the Corner
- Rushmoor Café
- The Aviator's Café

## RESTAURANTS

- Malacca
- Colosseo
- The Swan
- The Brasserie (Inside Aviator)

## BAR'S

- Aviator Sky Bar
- The Swan

## GYMS

- The Village gym
- Babylon Fitness Studio



amazonstudios

BBC

COLUMBIA  
PICTURES 

Disney

EON  
PRODUCTIONS

  
HARTSWOOD  
FILMS

HBO



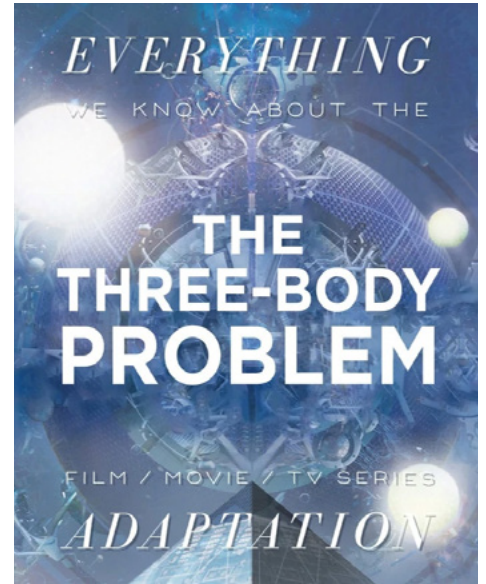
Metro Goldwyn Mayer  
TRADE MARK  
MGM

NETFLIX

  
SONY  
PICTURES™  
© 2000 SONY PICTURES ENTERTAINMENT INC.

20th  
CENTURY  
FOX  
I

WHO WE HAVE  
WORKED WITH



**CREDITS**



CONTACT US TO SEE HOW  
WE CAN SUPPORT YOUR  
***NEXT PRODUCTION***

---

**Rachel Morrison**

Studio Director, Farnborough International

E: [Rachel.Morrison@Farnborough.com](mailto:Rachel.Morrison@Farnborough.com)

T: +44 1252410970

M: +44 7743957714

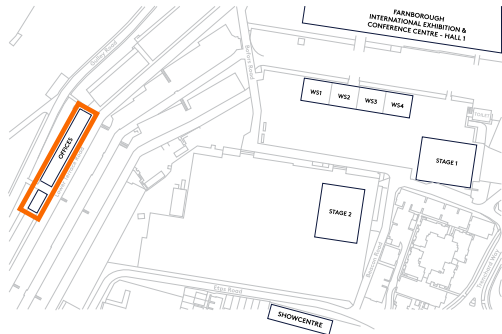
[www.farnboroughinternationalstudios.com](http://www.farnboroughinternationalstudios.com)

# APPENDIX *OF PLANS*

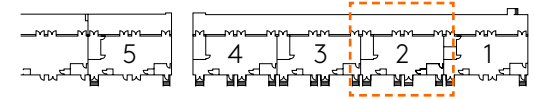
---



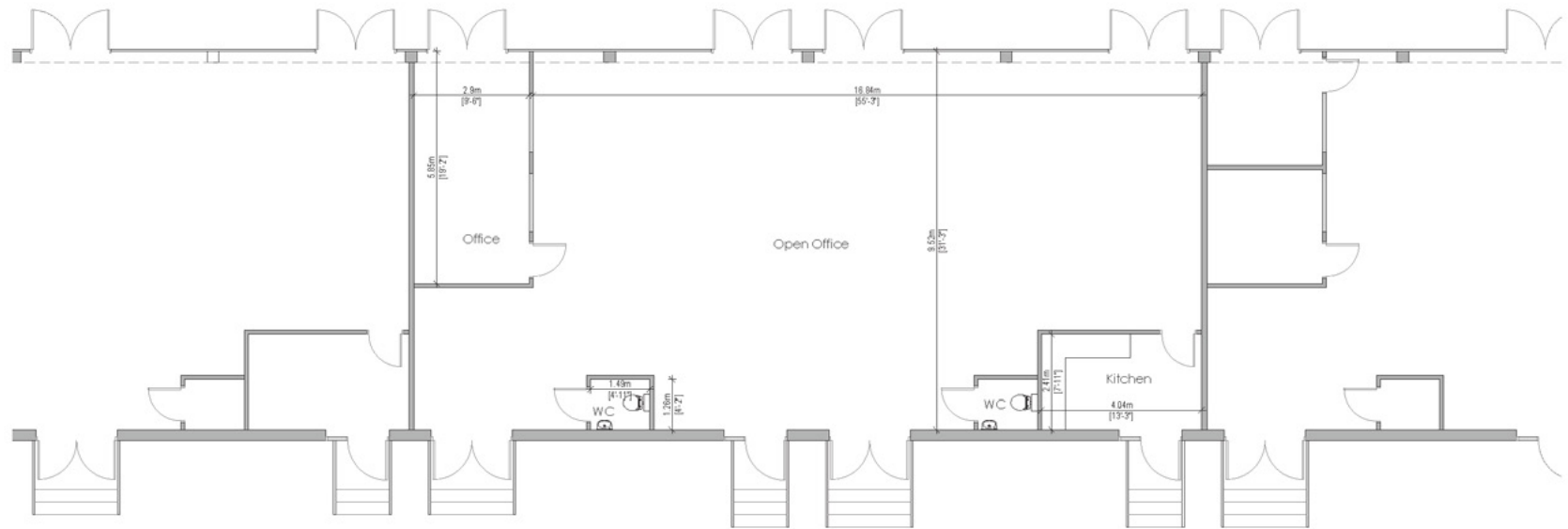




Key



External Deck

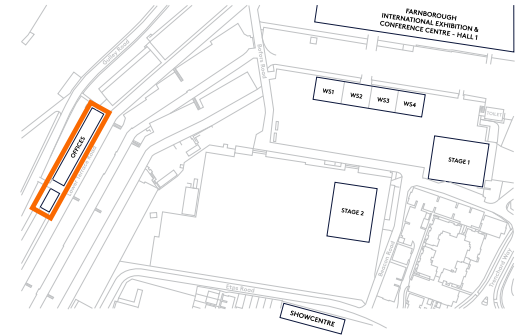
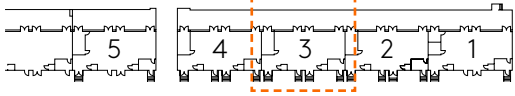


# CHALET OFFICE 2

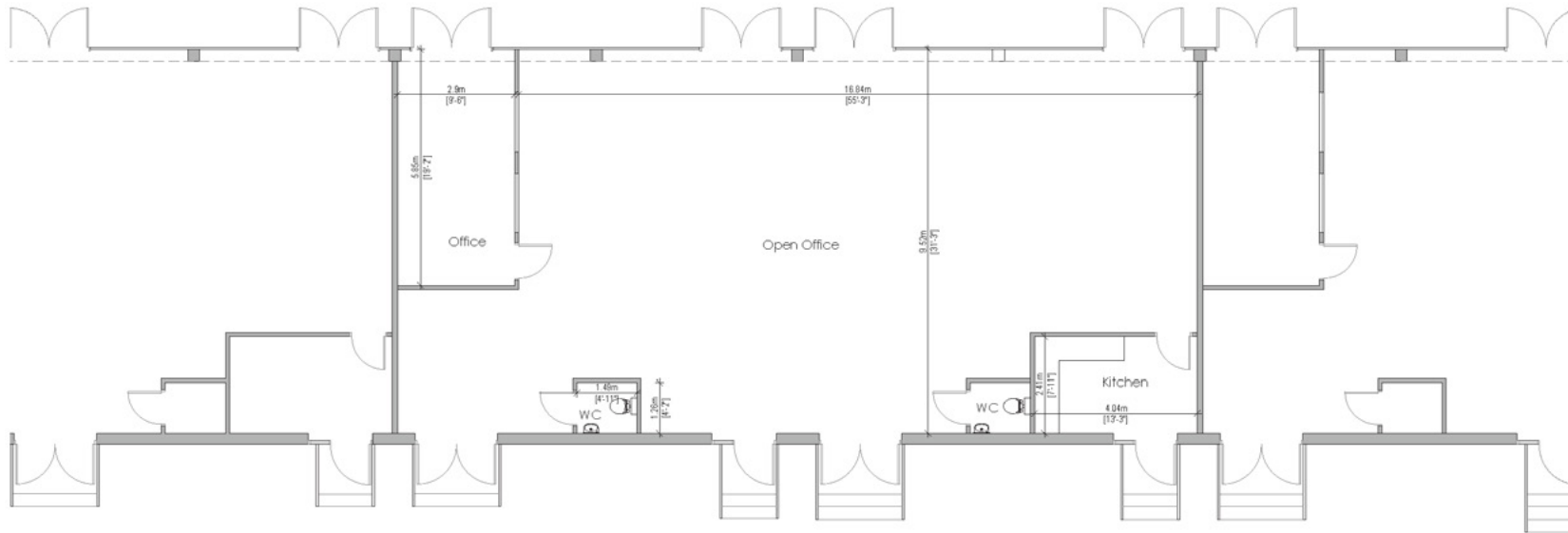
# PLAN

GROSS INTERNAL AREA: 189 SQM / 2024 SQ FT

Key



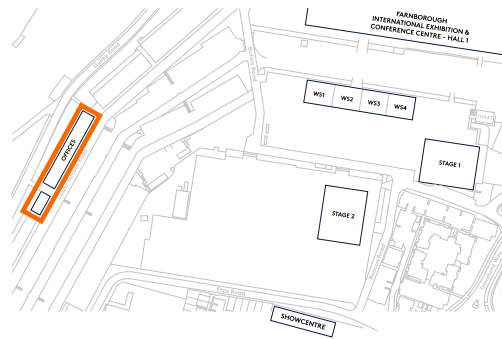
External Deck



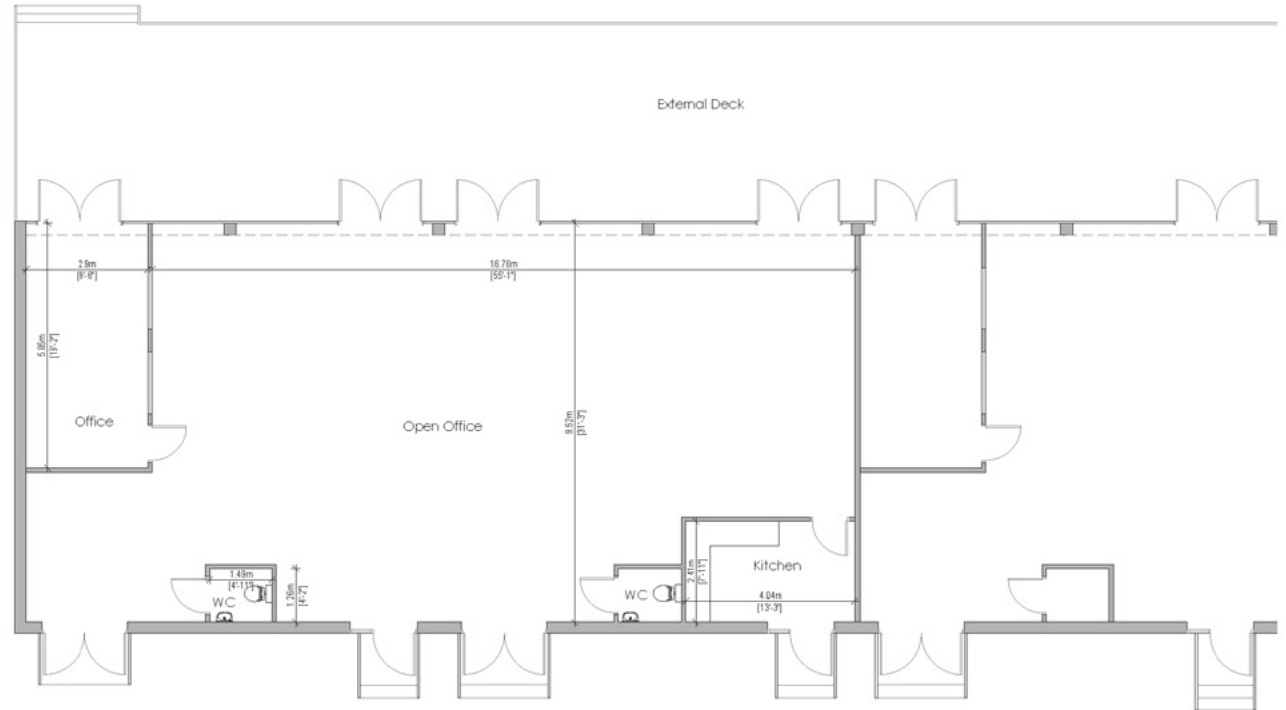
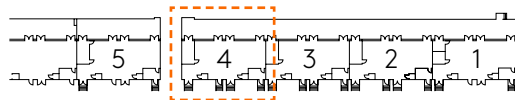
# CHALET OFFICE 3

# PLAN

GROSS INTERNAL AREA: 189 SQM / 2024 SQ FT



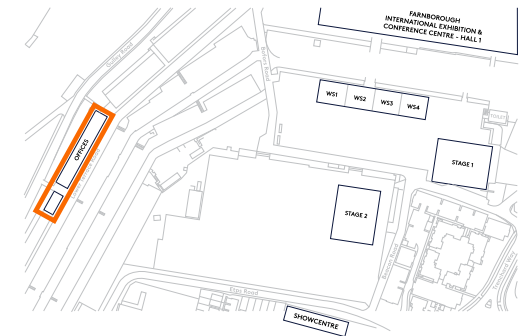
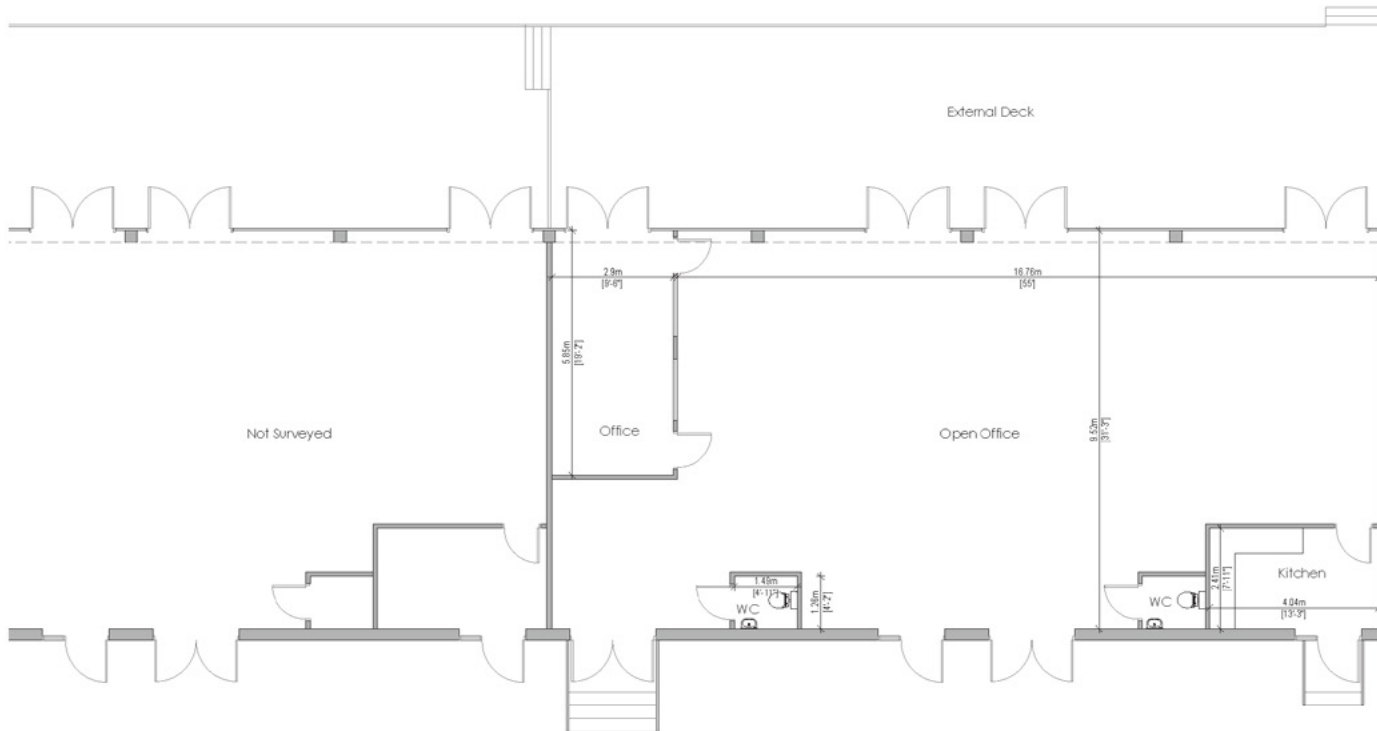
Key



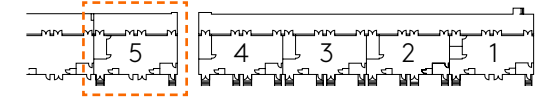
# CHALET OFFICE 4

# PLAN

GROSS INTERNAL AREA: 188 SQM / 2023 SQ FT



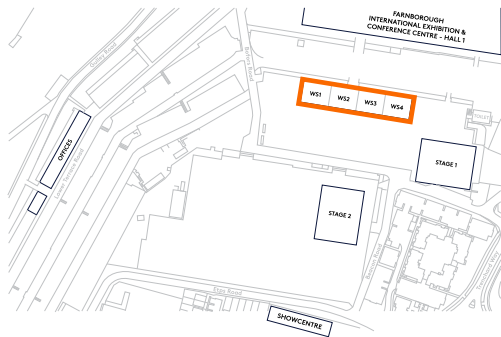
Key



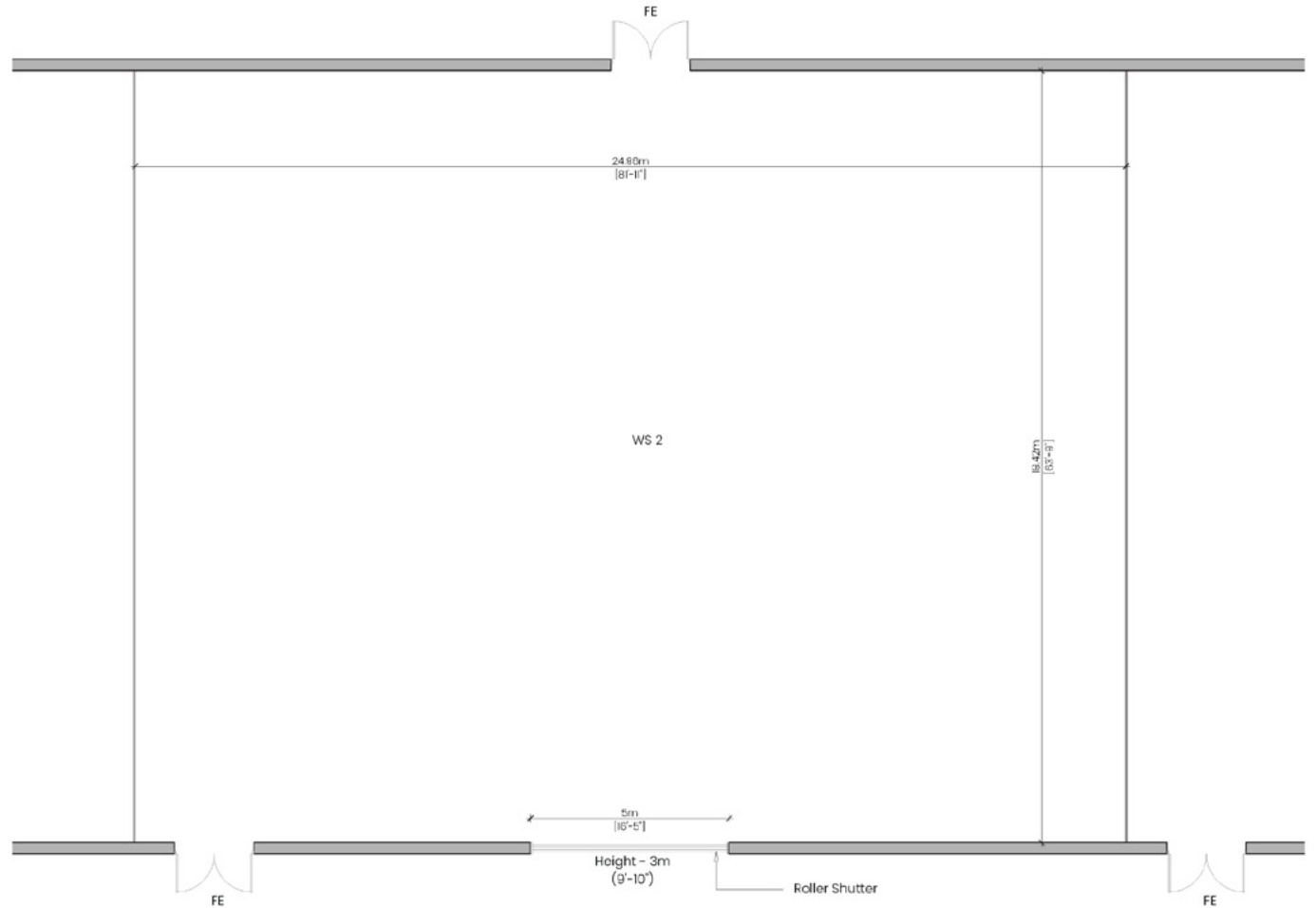
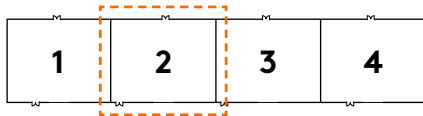
# CHALET OFFICE 5

# PLAN

GROSS INTERNAL AREA: 188 SQM / 2023 SQ FT



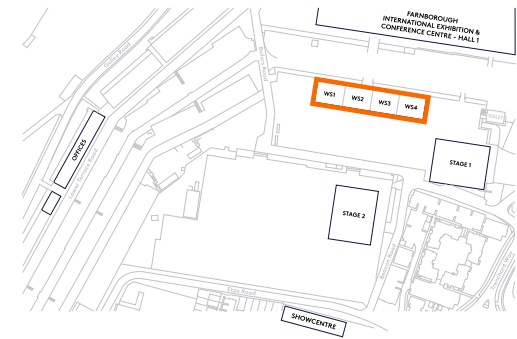
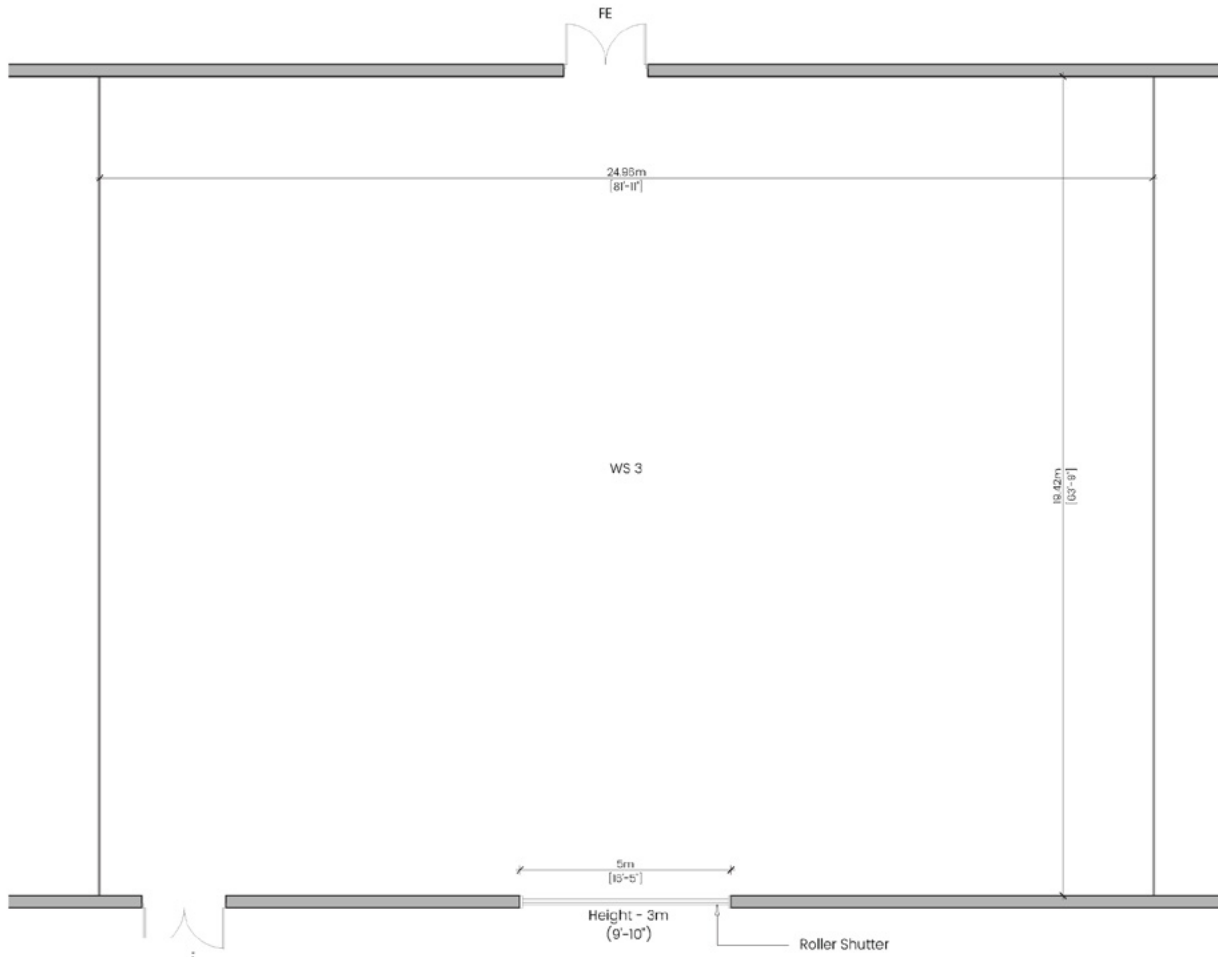
Key



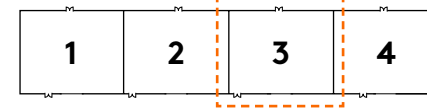
# WORKSHOP 2

# PLAN

GROSS INTERNAL AREA: 485 SQM / 5221 SQ FT

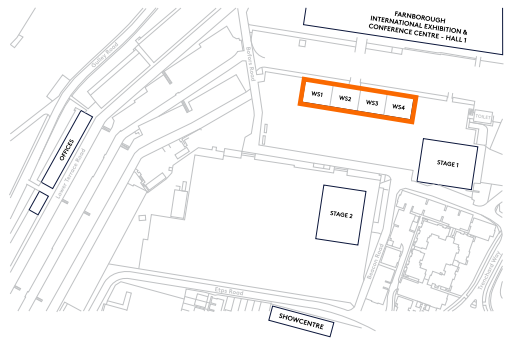


Key

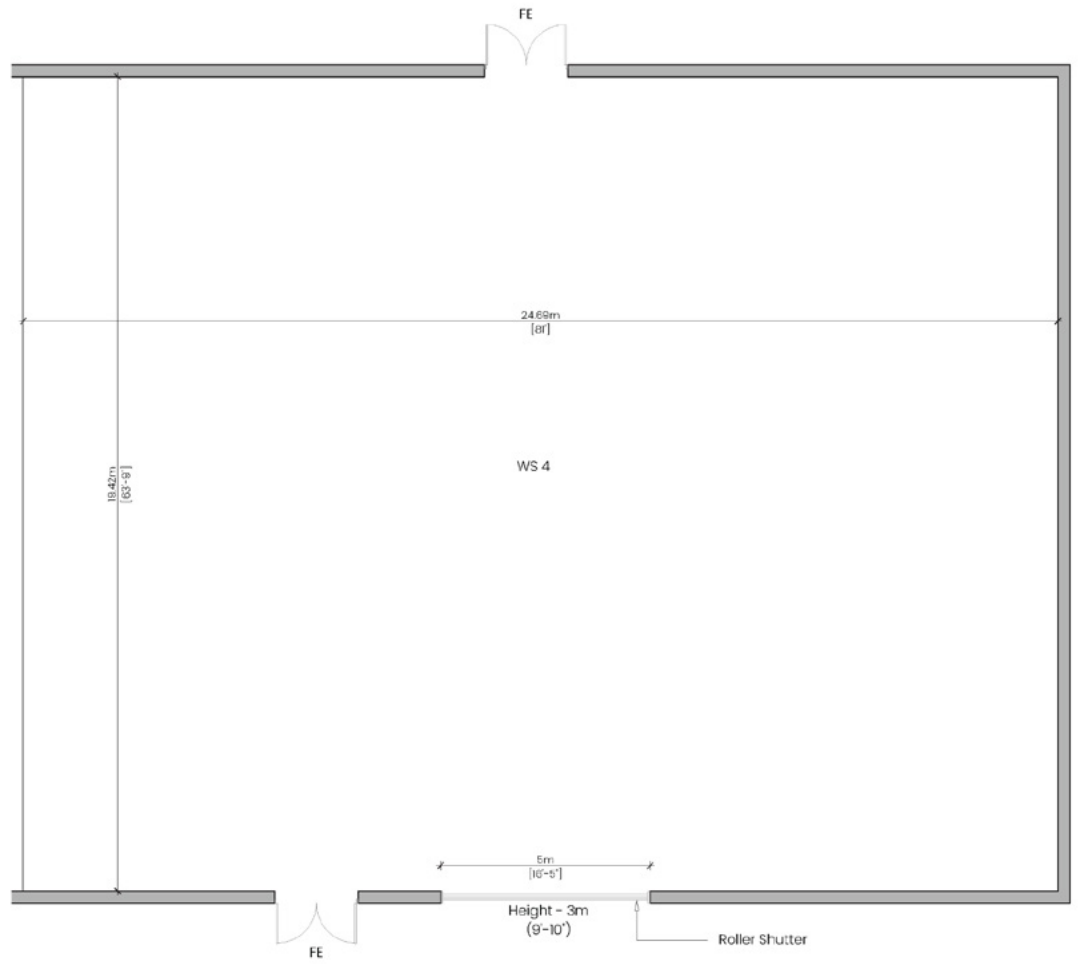
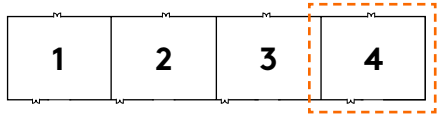


# WORKSHOP 3 PLAN

GROSS INTERNAL AREA: 485 SQM / 5221 SQ FT



Key



# WORKSHOP 4

# PLAN

GROSS INTERNAL AREA: 480 SQM / 5167 SQ FT